

The painting depicts a tall, white lighthouse with a dark lantern room, situated on a grassy hill. To the right of the lighthouse is a large, white, two-story house with a dark roof and red shutters. A small, white outbuilding is visible further to the right. The sky is a pale blue with soft, white clouds. The overall style is characteristic of Edward Hopper's work, with a focus on light and shadow.

# Cape Elizabeth Lighthouse Lens

Lantern Room Exhibit Concept  
Maine Maritime Museum

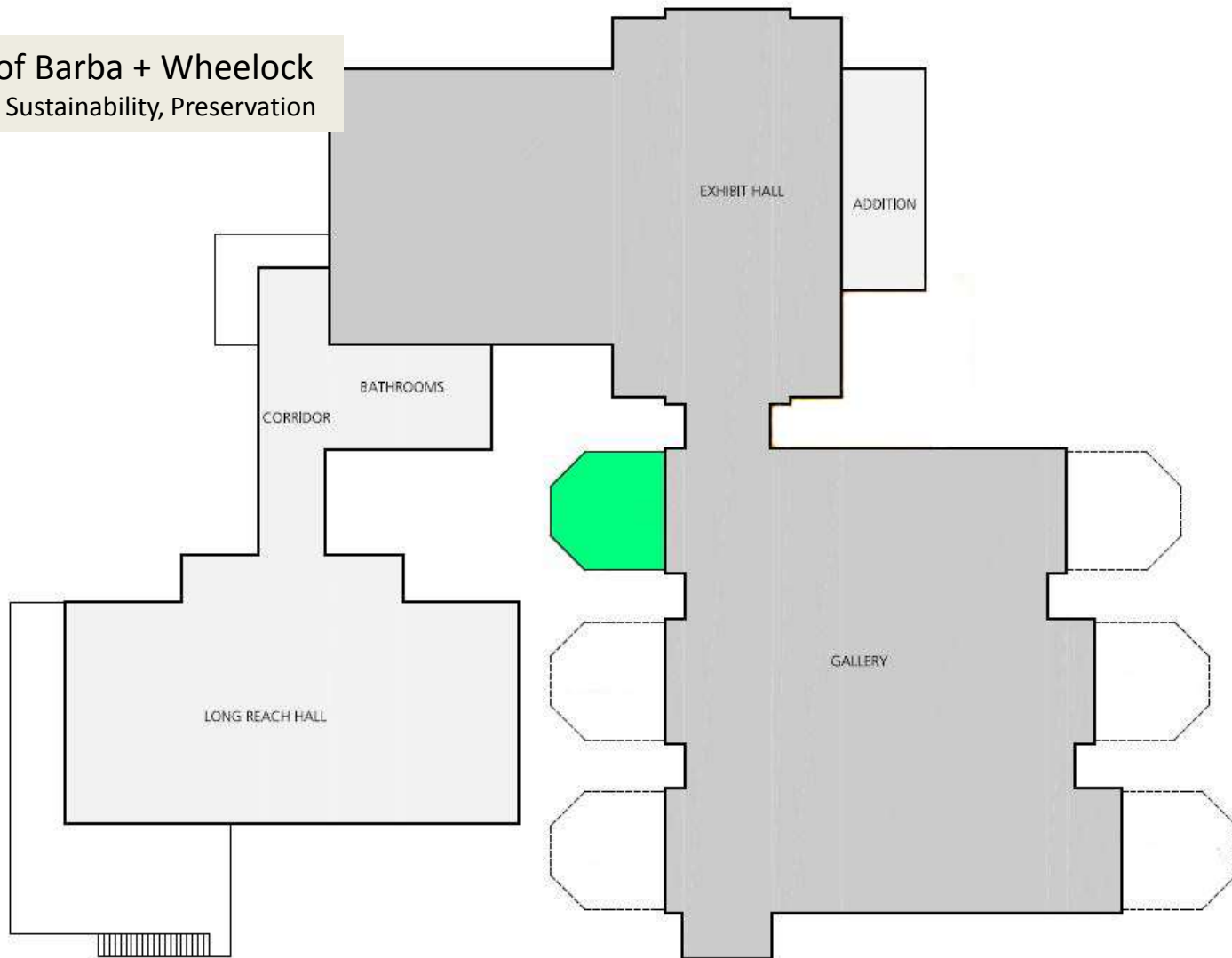
Edward Hopper, *The Lighthouse at Two Lights*, 1929

Combining a high-tech media projection system with a full-scale replication of the lighthouse tower lantern room, the exhibit will bring the visitor 'up into' the Cape Elizabeth Light to see not only the original 2<sup>nd</sup> Order Fresnel lens, but to also experience the environment of the lantern room as the keepers did, and to glimpse the panorama of the Gulf of Maine and the historical maritime approaches to Portland Harbor.

This installation will be unique to the world.

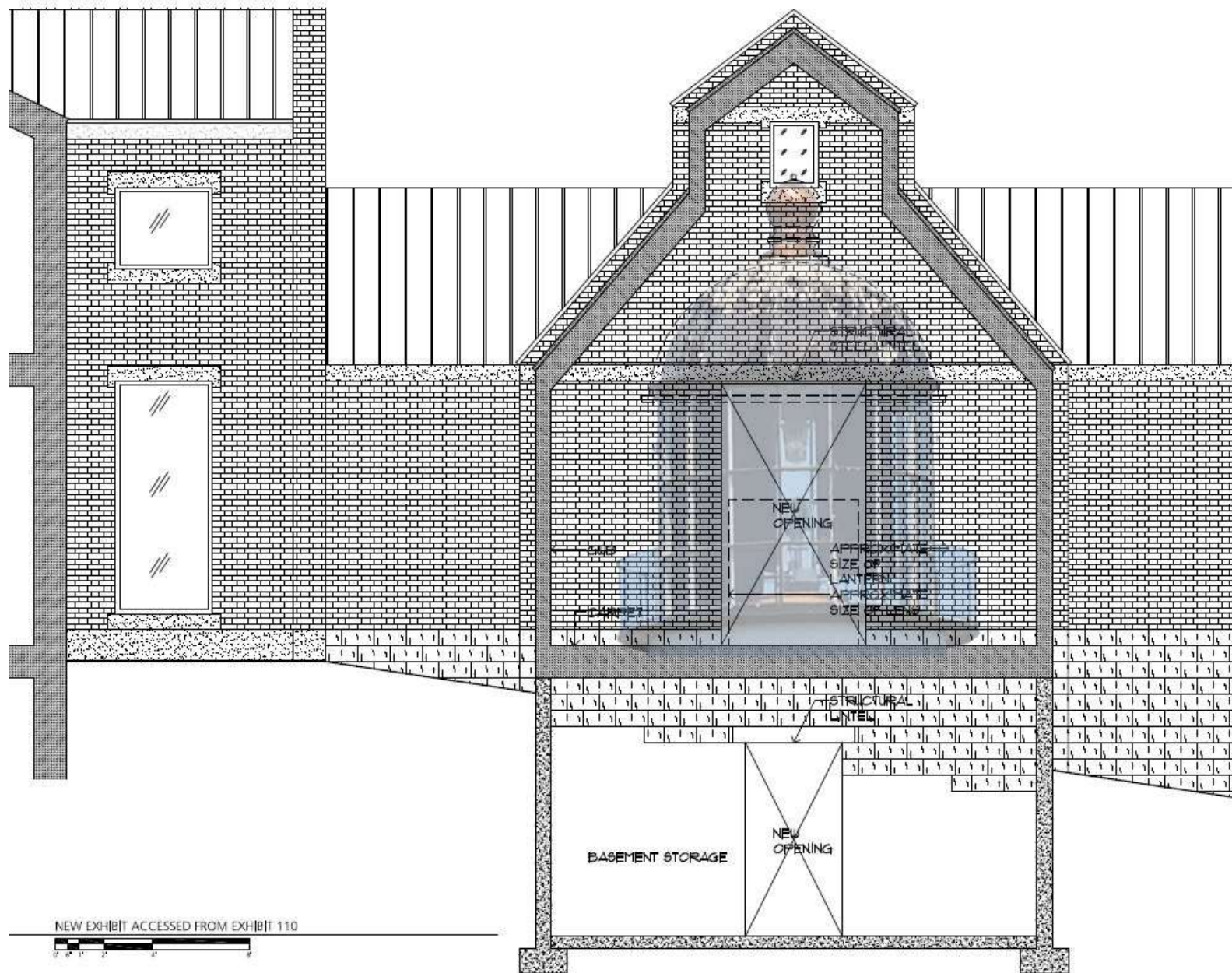


Courtesy of Barba + Wheelock  
Architecture, Sustainability, Preservation

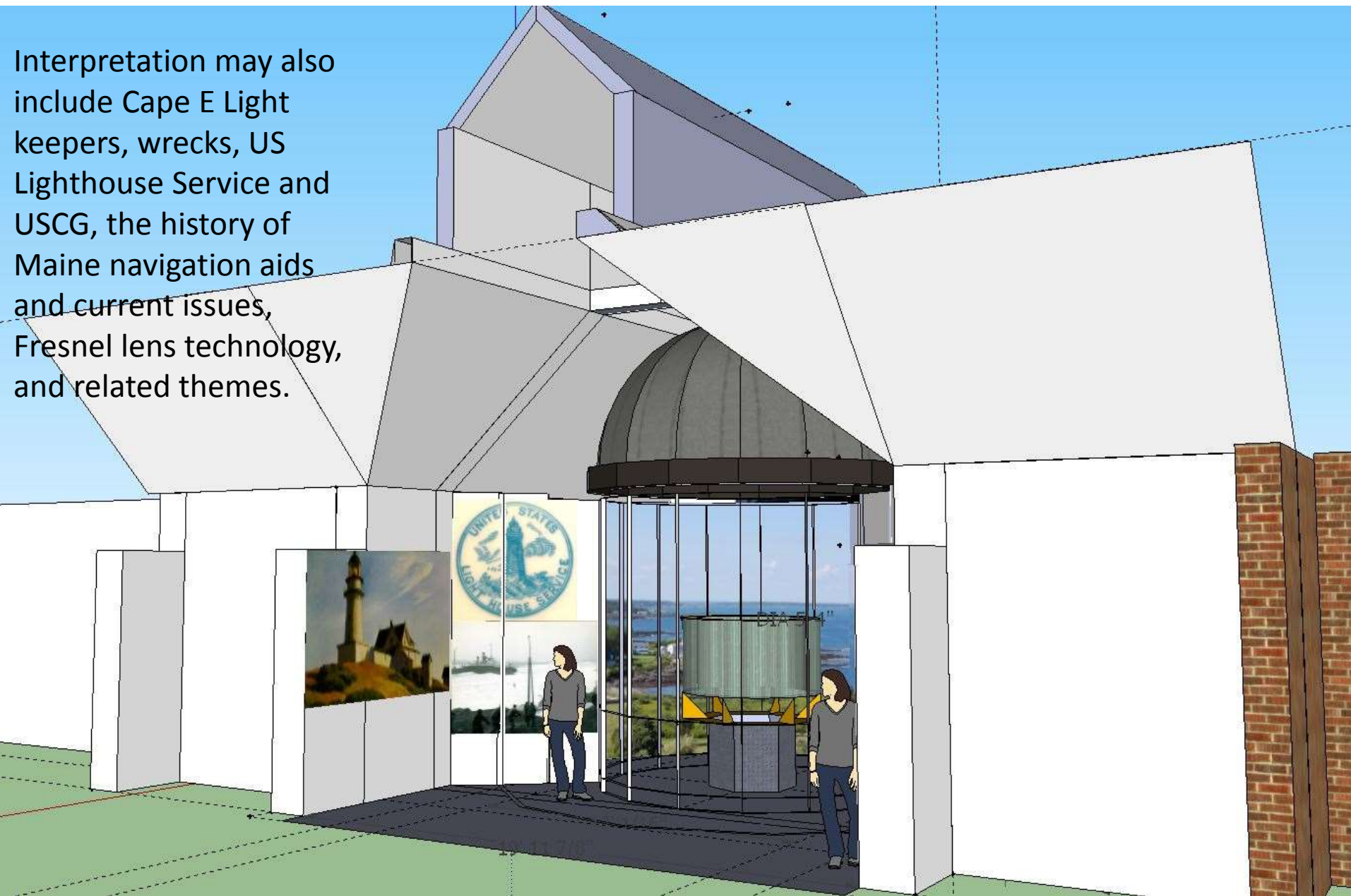


 SITE PLAN  
SCALE: 1"=20'-0"  





Interpretation may also include Cape E Light keepers, wrecks, US Lighthouse Service and USCG, the history of Maine navigation aids and current issues, Fresnel lens technology, and related themes.





Portland Harbor, at the western end of Casco Bay, is a major US port being the largest tonnage port in New England and the second-largest oil port on the East Coast. The port accommodates a large commercial fishing fleet, many cargo and cruise ship berths, and ferries bound for local islands and Nova Scotia. The waterfront thrives with fine dining, boutique shopping, a vibrant Art District, and provisions and marine services for commercial and recreational vessels. It is also one of the country's most scenic waterfronts and MMM intends to showcase this combination of natural beauty and commercial success.





## Project Cost Estimates

Design & construction	\$400,000
Exhibit design & installation	\$400,000
Programs, overhead, reserves	\$180,000
 Total Costs	 \$980,000
 Challenge Grant	 \$250,000
 Funding needed	 \$730,000

1989 Richard Cheek; frontispiece of *Guiding Lights to Beacons of Business*, Historic New England 2012